



GET STARTED WITH YOUR **SPACE VISION**

The Space Vision is the ideal place to start if you are struggling to work out how your home can fit everything you need.

It helps you to get clarity over what you want and what is possible before committing to the cost of detailed design.

Potential problems can be highlighted early on and it's better to realise an idea won't work on paper than half way through the work.

The Principles I Follow

- Keeping the build/ construction as simple as possible
- I work on the layout and function before considering colours & finishes etc.
- I try to recommend products that can be bought or constructed relatively easily
- If items are bespoke I consider whether they could be moveable (so you could take them with you if you moved)

What is Included?

- A list of design needs & wants
- A simple design layout
- General recommendations concerning products and finishes
- A note of any aspects that will need particularly careful planning or specialist advice

*Understand
what is possible.*

What Comes Next?

Once the outline design is done you can come back for more detail if you wish or you can proceed on the project without further advice.

Although the plan does not include a detailed specification it is enough for you to proceed on your own.

Get in Touch

Philippa Richard

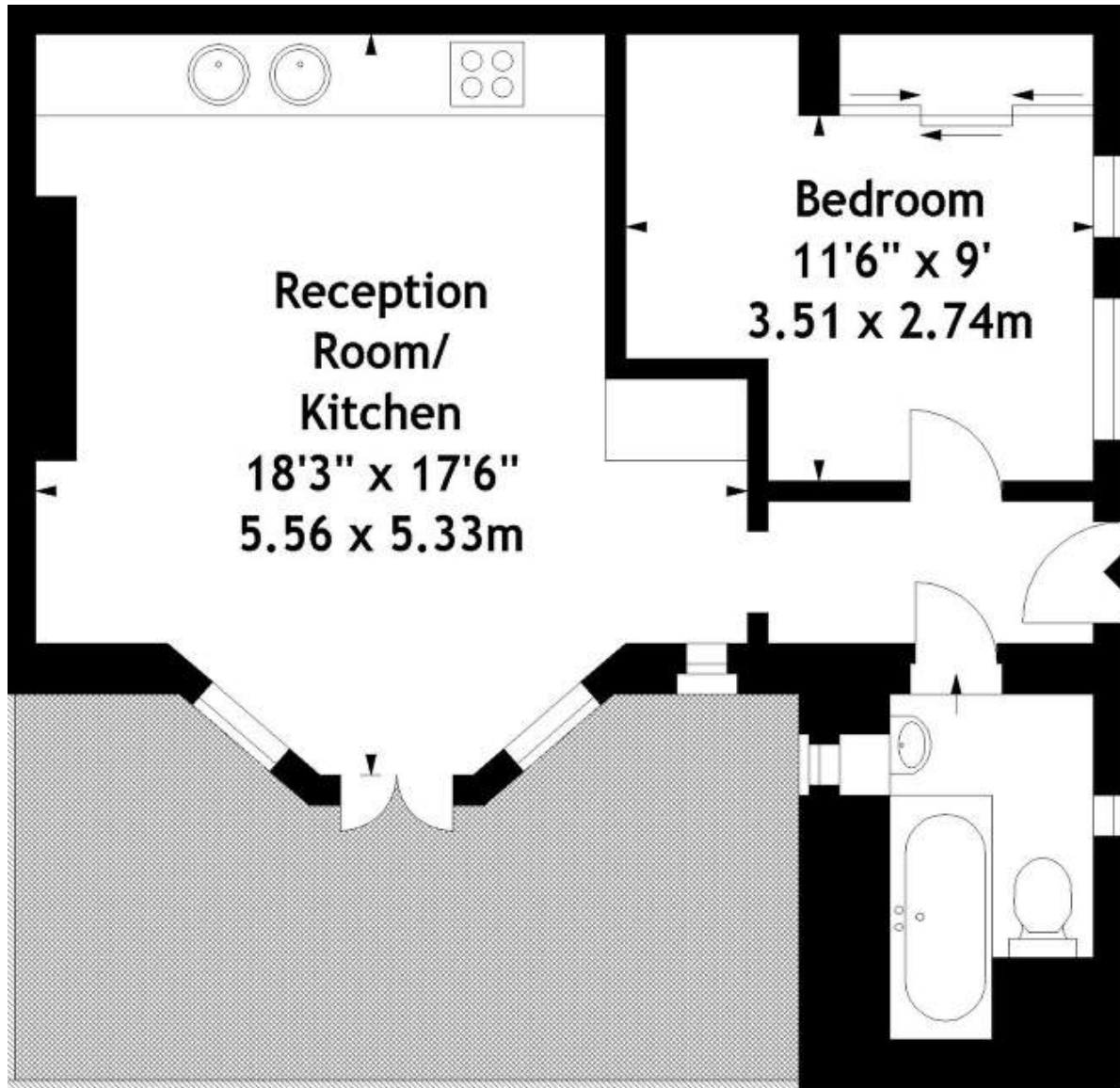
07788 290744

www.aceyourspace.co

philippa@aceyourspace.co

One bed Apartment - remodelling ideas

Original Layout



Needs & wants

- Make the kitchen a less dominant feature of the main room.
- Provide more storage
- Provide somewhere to dry laundry
- Somewhere for guests to sleep
- Desk space for working from home without using the dining table

One bed Apartment - remodelling ideas

The Problems

The problems are not just the vivid yellow and the pine floors. The kitchen dominates the main room. There is a lack of other storage space. The washing machine is in the main room (which takes space and creates noise - it's also not obvious where clothes could be dried.)

The bedroom is a good size but an awkward shape - not helped by the built-in cupboards. The bathroom layout wastes space in a room that is not too bad a size.



Colours are too vivid.

Too many competing styles and elements; e.g. tiles, floor, fireplace

Washing machine could be disruptive

Shelves are awkwardly placed. They prevent putting furniture on this wall but don't provide much storage.



Ceiling fittings do not provide a good and attractive range of light

Lots of bottle storage but lacking full height storage for things like coats, mop, vacuum cleaner, etc.

Radiators are bulky and make this area look too busy

One bed Apartment - remodelling ideas

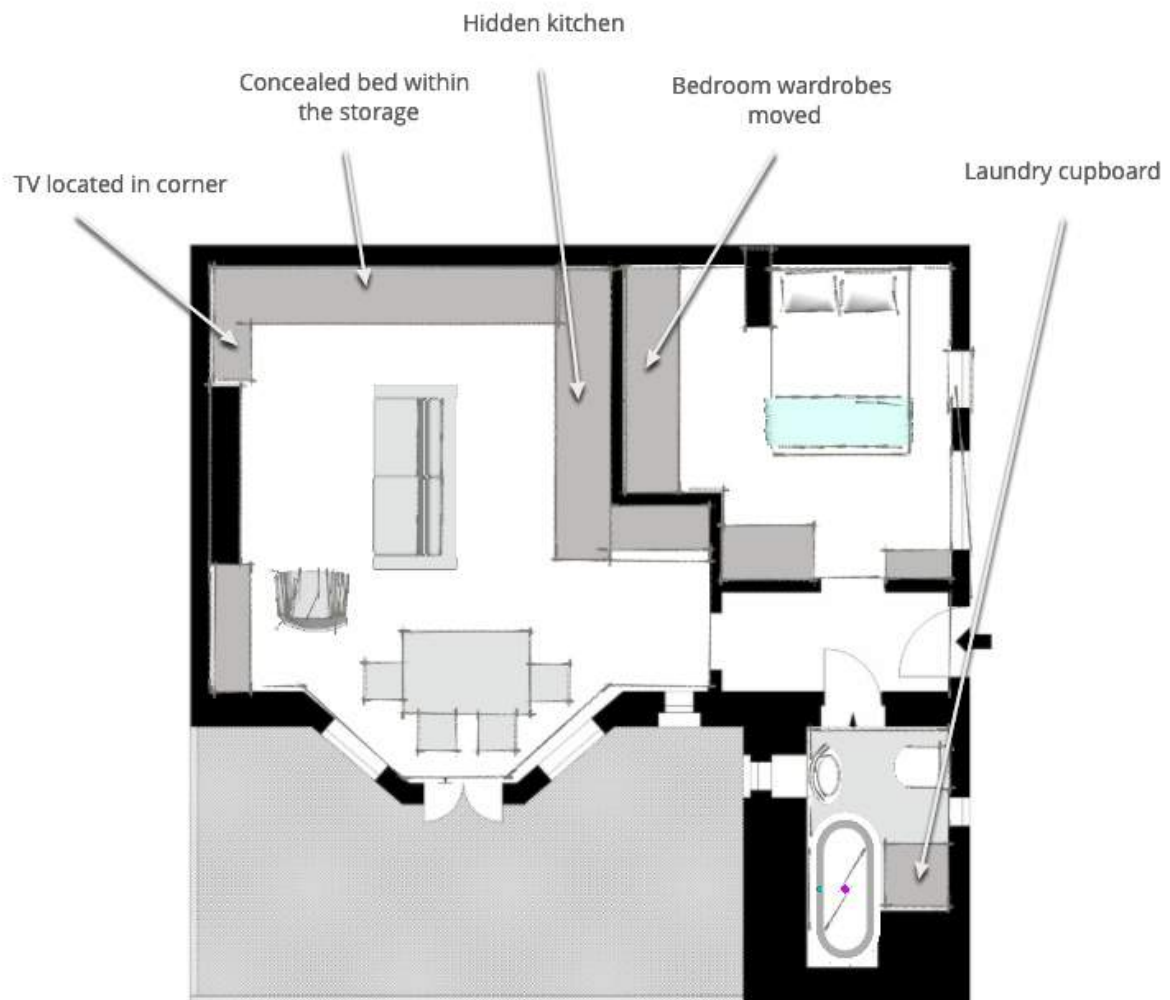
Proposal

With some remodelling the apartment can have plenty of space for living, working and entertaining (there is more than one possible layout).

The bedroom is large enough to have a double bed, lots of storage and space for a desk.

The bathroom could be altered to include a laundry cupboard.

Lots of co-ordinated built-ins could transform the main room. It can easily have space for the kitchen, the living room, a fold-down murphy bed for guests and a desk/ work area. This is in addition to a handy broom cupboard.



One bed Apartment - remodelling ideas

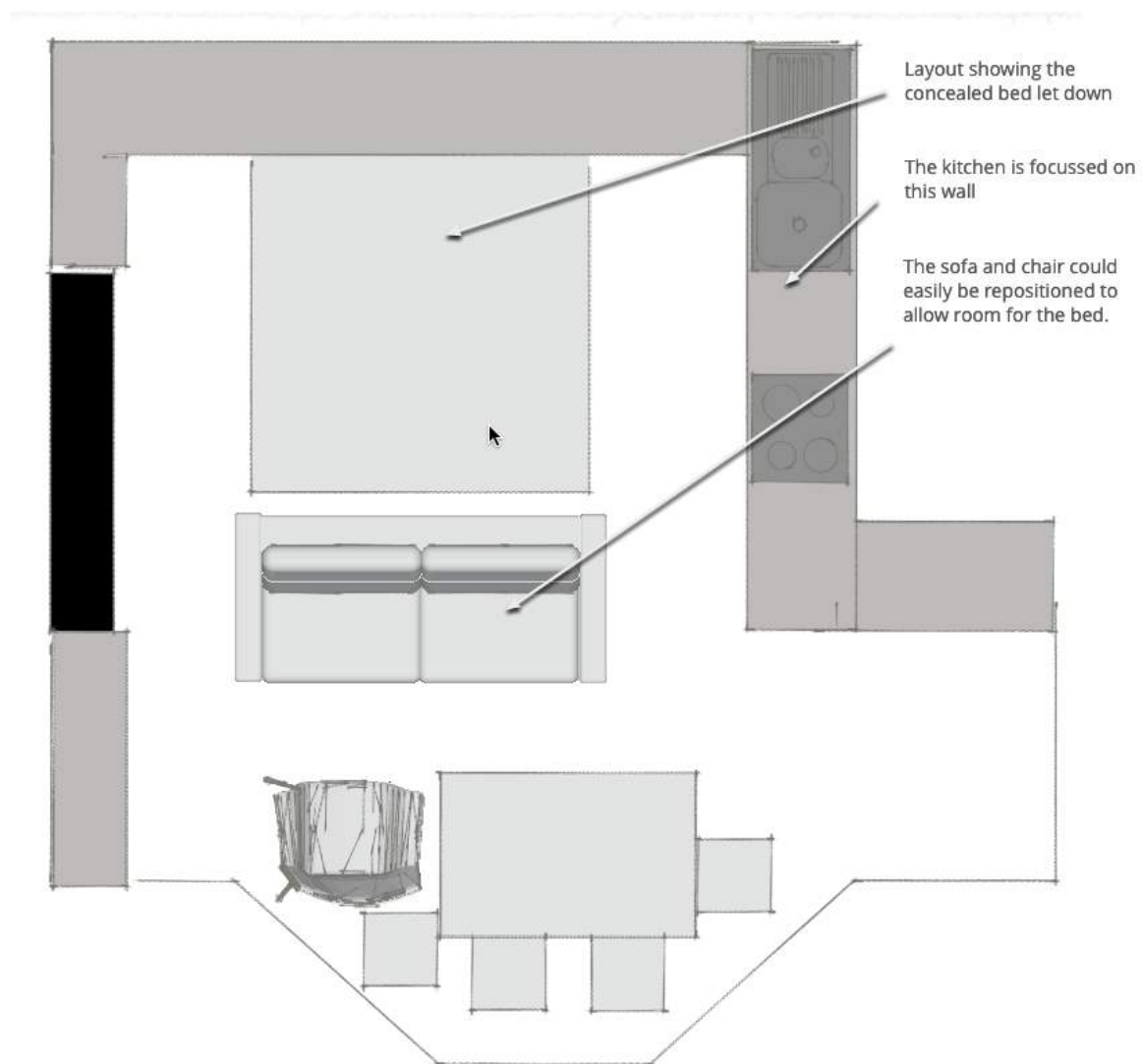
Main room

The main room needs to contain kitchen, lounge, dining and possibly also a spare bed for guests.

Clever use of built-in furniture could achieve this.

There are units that can hold a concealed bed behind a shelving unit that swivels. The entirety of 2 walls could house all the kitchen and the storage, with more storage on the other side of the fireplace nearer the windows.

To gain space I would also change and maybe move the radiators - they take up a lot of space and make the door area look cluttered.



One bed Apartment - remodelling ideas

Bedroom

There are 4 possible layouts for the bedroom. Options 3 & 4 require removal of some walls so it would be necessary to see if this is possible.

Even just moving the wardrobes would allow a better bed placement.

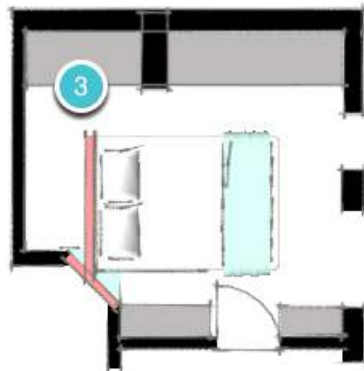
1. Move wardrobes only to allow a better bed position



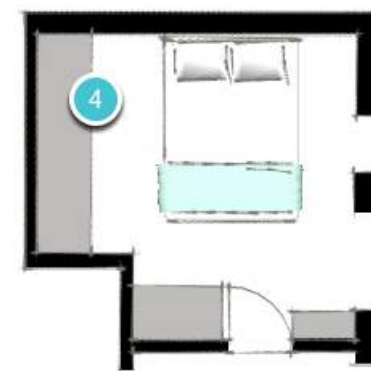
2. Move wardrobes and angle bed. Some shelves or cupboards could fill the corner behind the bed.



3. Take a corner off the wall next to the kitchen. Build a bedhead wall that can conceal a walk-in wardrobe area.



4. Remove the wall that protrudes into the room opposite the door.



One bed Apartment - remodelling ideas

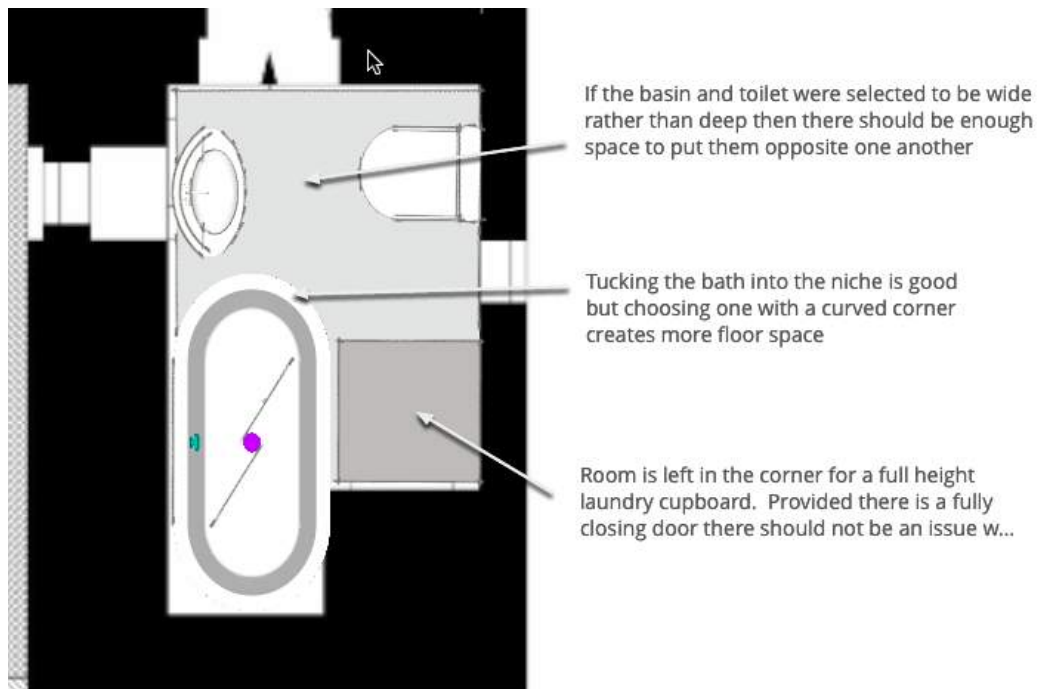
Bathroom

Keep the bath location but add a bath that has a rounded corner - this will create more space near the entrance.

Use a wide but shallow basin.

Add a short projection toilet opposite the basin.


This leaves room next to the bath to put a full height laundry cupboard - for machine and either hanging space or dryer.




One bed Apartment - remodelling ideas

Resources & ideas


Links to Pinterest Board/ Houzz ideabook

 Philippa Richard @You Just ... **Small apartment** [Follow board](#)




The folding, sliding pocket door from Dada.

Pinned from [dadaweb.it](#)




Swivel wall bed doesn't mean sacrificing storage space.




Wall bed concealed behind a cupboard that swivels.

Pinned from [haagsbeddenbedrijf.nl](#)




If the bed is in the corner it could have storage above

Pinned from [houzz.co.uk](#)




Lightweight table legs and clear chairs don't block the view too much.

Pinned from [houzz.co.uk](#)



A bath with one round corner creates valuable floor space in a bathroom

Pinned from [images.alt.qssupplies.co.uk](#)




▶ PLAY

from InsideSeen Design Blog

Designer Spotlight: Clei

This video from the InsideSeen Design Blog highlights some of the amazing and easy movements of Clei's truly transformative furniture. Find it at @Diana Pitt Furniture

Pinned from [blog.fabricseen.com](#)



A neat laundry cupboard could be built next to a shower (or bath)

Pinned from [vismaravetro.it](#)

Further planning or specialist advice needed

Determine whether knocking down any walls will need a party wall agreement - the other party may ask to appoint their own surveyor and you pay the cost.

The changes probably won't need planning permission but will need to meet building regulations.